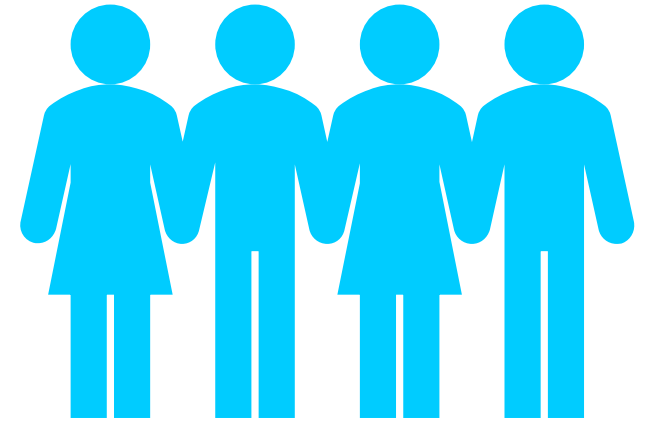


# Community Meeting

Village of Bosque Farms  
COMPREHENSIVE PLAN UPDATE 2023  
March 30, 2023  
6:30 – 8:00 PM



# INTRODUCTIONS

## Sites Southwest

Danielle Wilson, Planner ([dwilson@sites-sw.com](mailto:dwilson@sites-sw.com))

Nate Begay, Planner ([nbegay@sites-sw.com](mailto:nbegay@sites-sw.com))



# MEETING PURPOSE

- Share what we've heard so far from the community
- Review and refine draft Goals, Policies and Actions
- Vision potential future uses and amenities for the new Village property



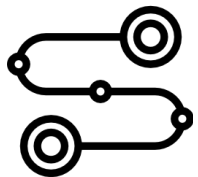
# OVERVIEW: Why have a plan?



- **Assesses** where Bosque Farms is **today**



- Documents what residents and community leaders in the village **want for the future**

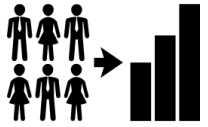


- Outlines the **steps to get there**

# A COMPREHENSIVE PLAN...

- Is a **guide** for current and future **decision making**
- Identifies needs that support the Village's **capital funding requests** (ICIP)
- **Builds public support** and consensus for Village projects and programs
- Documents the **purpose and need for Village policies**
- Makes Village **grant applications** more competitive

# COMPREHENSIVE PLAN ELEMENTS



Community Profile



Economic Development



Land Use



Transportation



Housing



Community Facilities & Services



Infrastructure



Hazard Mitigation



Implementation/ ICIP

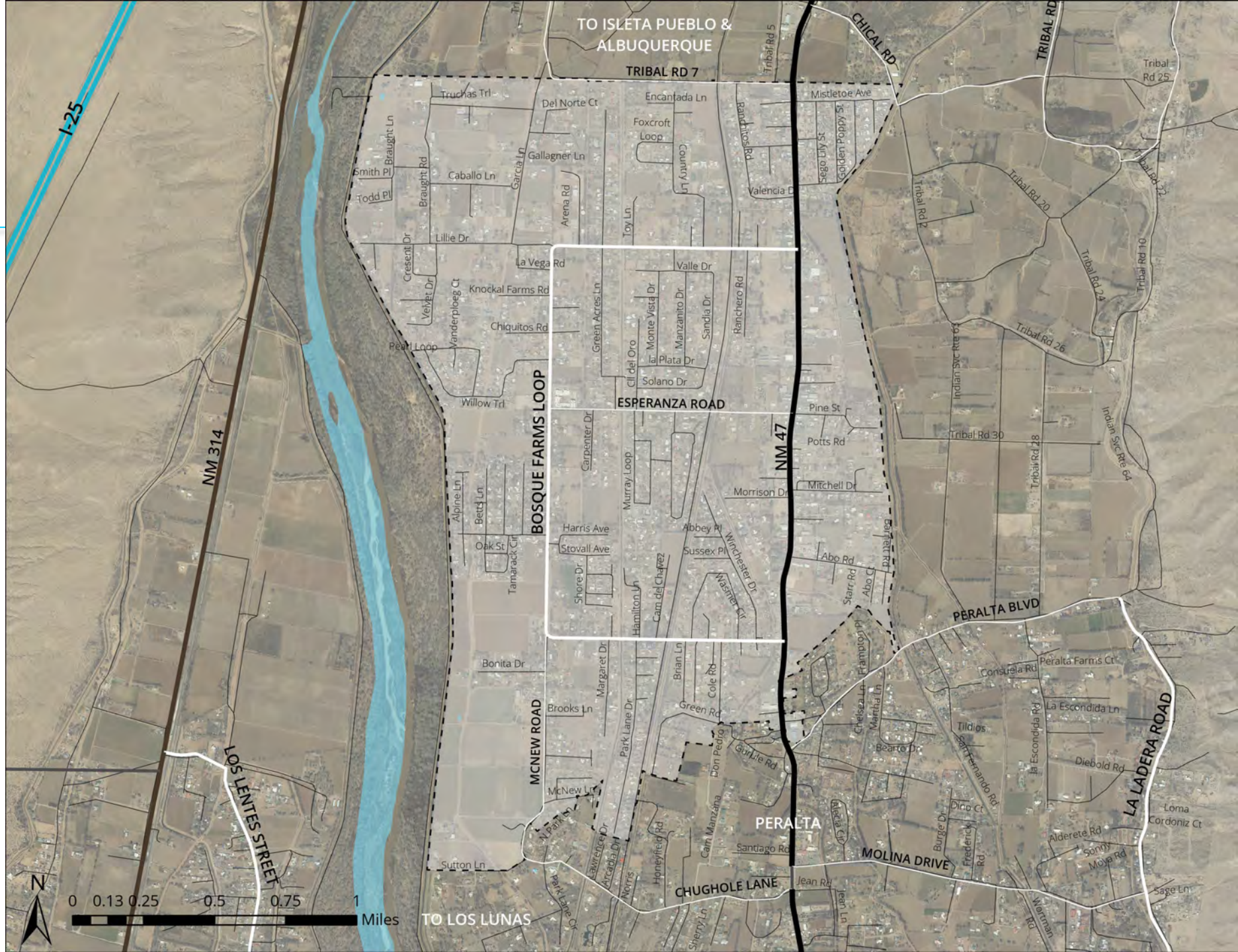


# BOSQUE FARMS TODAY



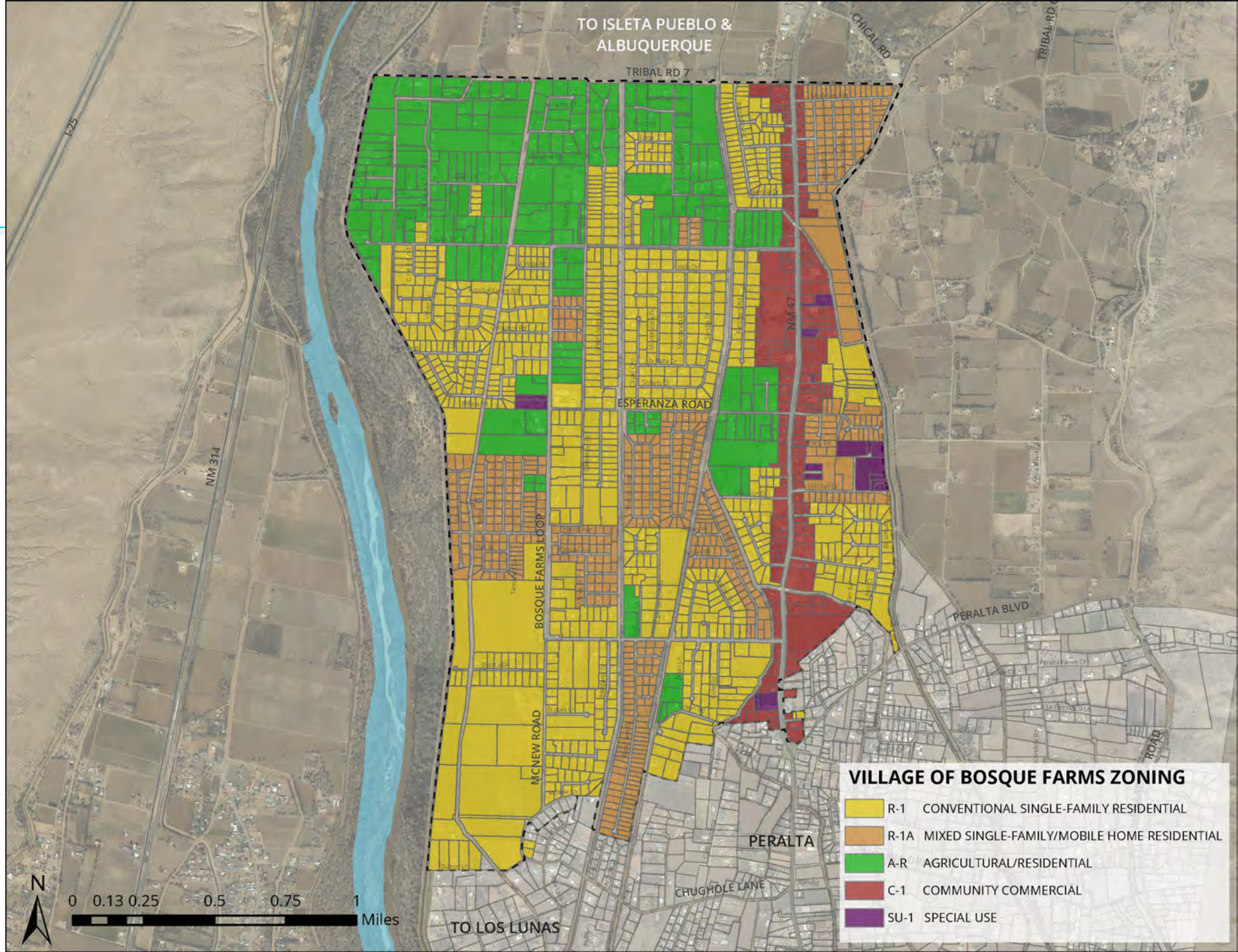


# OVERVIEW



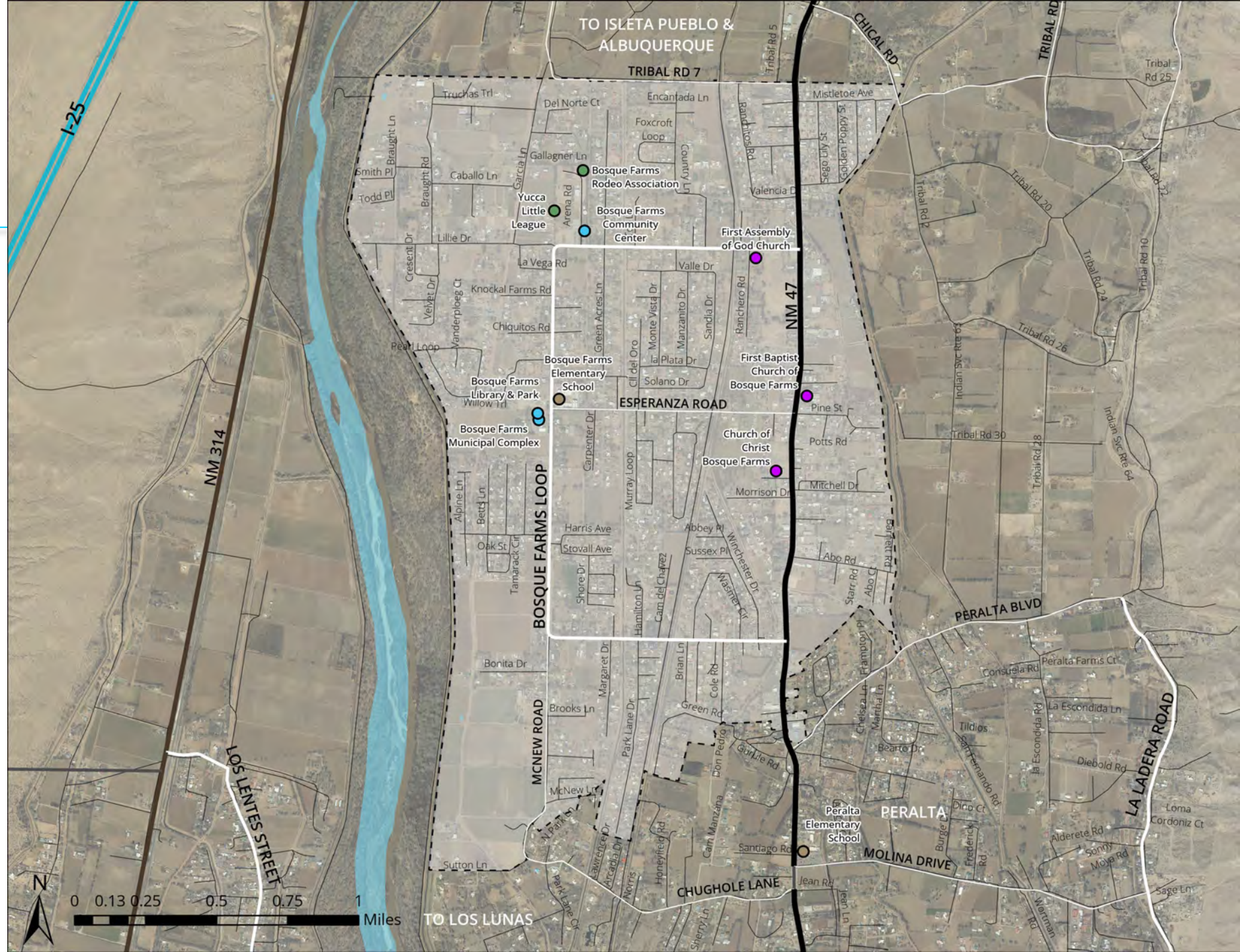


# ZONING



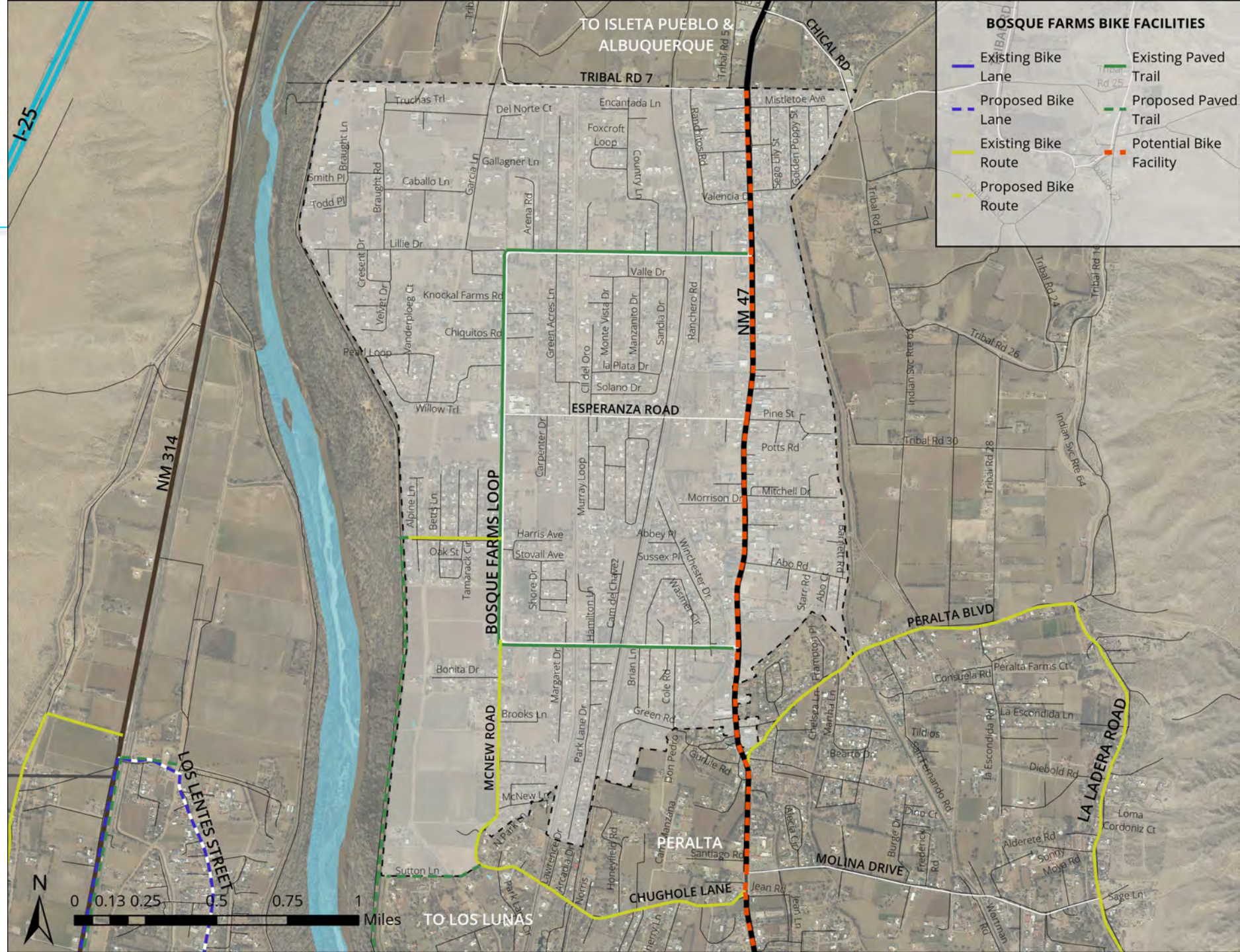


# FACILITIES





# BIKEWAYS





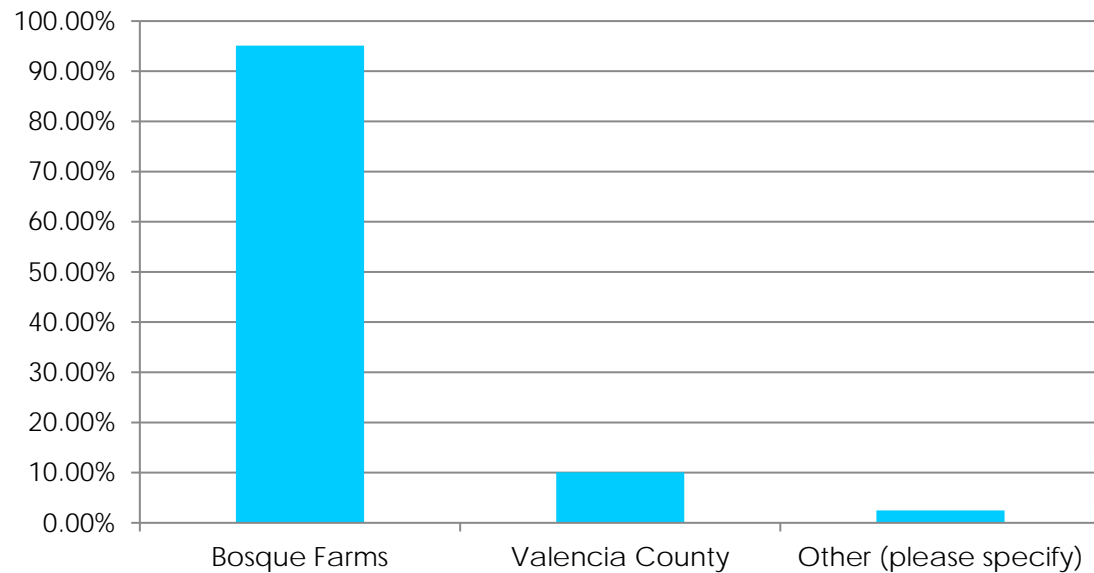
# COMMUNITY ENGAGEMENT

- 3 Steering Committee Meetings
- 1 Community Meeting
  - *November 10, 2022*
  - *2<sup>nd</sup> Meeting scheduled for March 30*
- 412 Surveys completed
  - *Open January 6 – February 20*



# SURVEY RESULTS

Are you a resident of

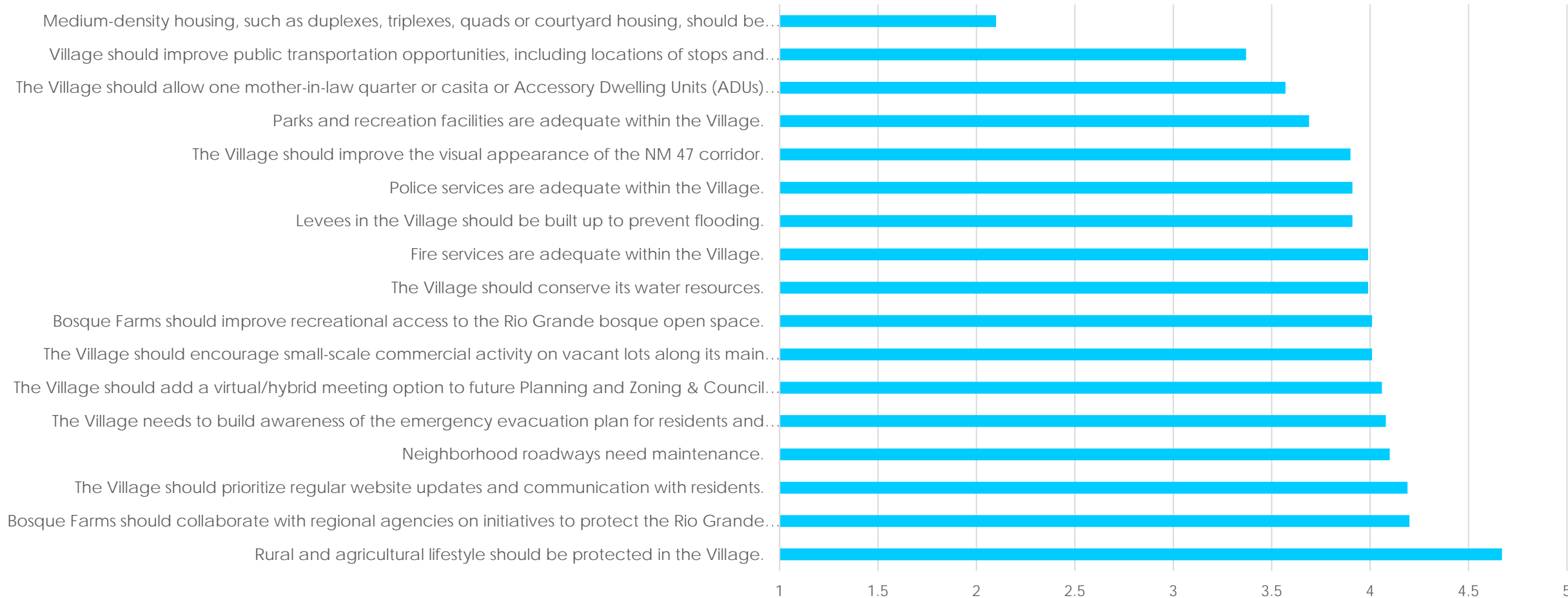


Which words best describe the character of Bosque Farms?



# SURVEY RESULTS

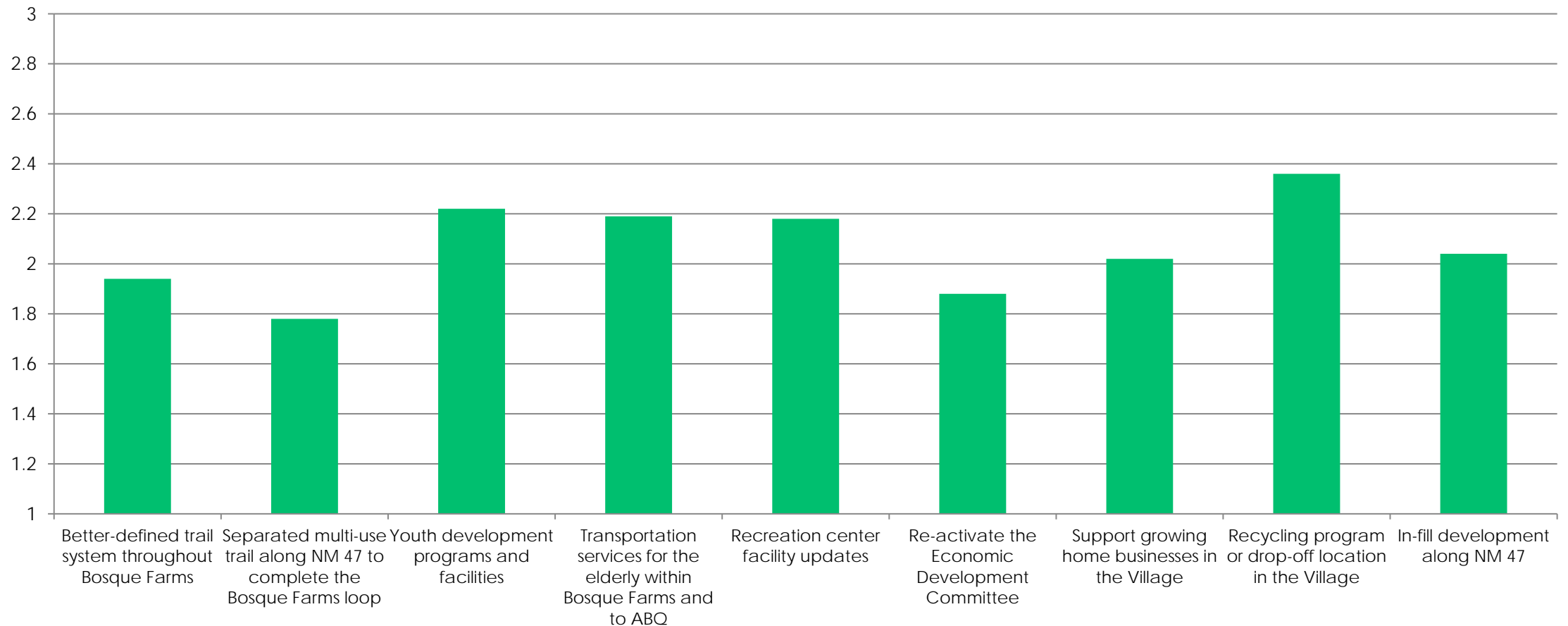
Topics and Concerns: Rated from 5 = strongly agree to 1 = strongly disagree





# SURVEY RESULTS

Future Priorities: Rate from 3 = Most important to 1 = Not Important



# SURVEY RESULTS

Please list your top three priorities for future projects:

## Priority #1



## Priority #2



### Priority #3



# SURVEY RESULTS

What businesses and services would you like to see in Bosque Farms?



Theme	Count
Food/Drink	147
Grocery Store/Supermarket	143
General Retail	66
Specialty Services	44
Medical	31
Home/Local Businesses	30
Recreation/Family-friendly	24



# SURVEY RESULTS

What additional park and recreational facilities would you like to see in Bosque Farms?



Theme	Count
Swimming Pool	93
Sporting Fields and Facilities	76
Parks and Playgrounds	62
Trails and Open Space	49
Fitness Center	38
Youth and Family Programs	28
Community/Senior Center	21



# SURVEY RESULTS

What would you like to see in the 4-acre property in the future?



Theme	Count
Recreation	160
Public/Civic Institutions	75
Education	46
Open Space	27
Commercial	18
Police/Fire/EMT Facility	16
Event Venue	12



# SURVEY RESULTS

Is there anything else that you think is important to include in the comprehensive plan?

- Recycling program and drop-off area
- A swimming pool for the village
- Beautification throughout the Village, focusing on NM 47
- Encourage needed businesses to Bosque Farms (grocery store and restaurants)
- More youth and senior services
- Repair and maintain roadways
- Maintain rural character in the Village
- Provide more recreational facilities
- Improve presence of law enforcement
- Improve speeding enforcement



# DISCUSSION TABLES

---

## Land Use, Housing, Economic Development, Community Facilities

What is missing from the  
actions and priorities?

Please review draft  
language and revise, as  
necessary.

## Transportation, Infrastructure, Hazard Mitigation

What is missing from the  
actions and priorities?

Please review draft  
language and revise, as  
necessary.

## Village Property Conceptual Design

### Programming, Land Use, Amenities

What activities do you  
want to see here?

How should the Village  
use this space?

---

GOALS, POLICIES, ACTIONS REVIEW

---

# THANK YOU

Questions or Comments?

Contact: **Dani Wilson**

[dwilson@sites-sw.com](mailto:dwilson@sites-sw.com)

616-902-4429

